



The Product

Biography of ShowerGuard



In the Beginning

...Guardian was working to create a heat treatable, scratch resistant coating called DiamondGuard...

We noticed the Diamond-Like Carbon layer (aka **DLC**) oxidized while being tempered, reducing the coating's scratch resistance. However, it was noted the coating maintained it's easier to clean characteristics.

So, in Guardian's true entrepreneurial fashion, this was turned into an opportunity of a different kind – thus the inception of ShowerGuard.





Coating Process

Guardian's patented ion-beam deposition, used for ShowerGuard, was first developed in Russia for space propulsion. Guardian has since then optimized this operation for materials processing.



The substrate (glass) enters the coater, gas is then pumped in hitting the targets to create plasma which is then deposited on the glass.

Patented Technology

Ion-beam process permanently seals the glass surface, stopping corrosion before it starts.

Guardian's production beams permit deposition on an *unprecedented* scale.





The Need for Protection



Heat and Humidity
degrade glass over time



Cleansers and Soap

Build-up Over Time



Hard Water

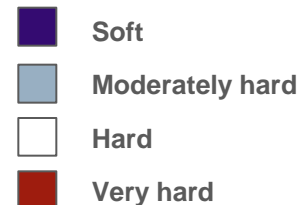
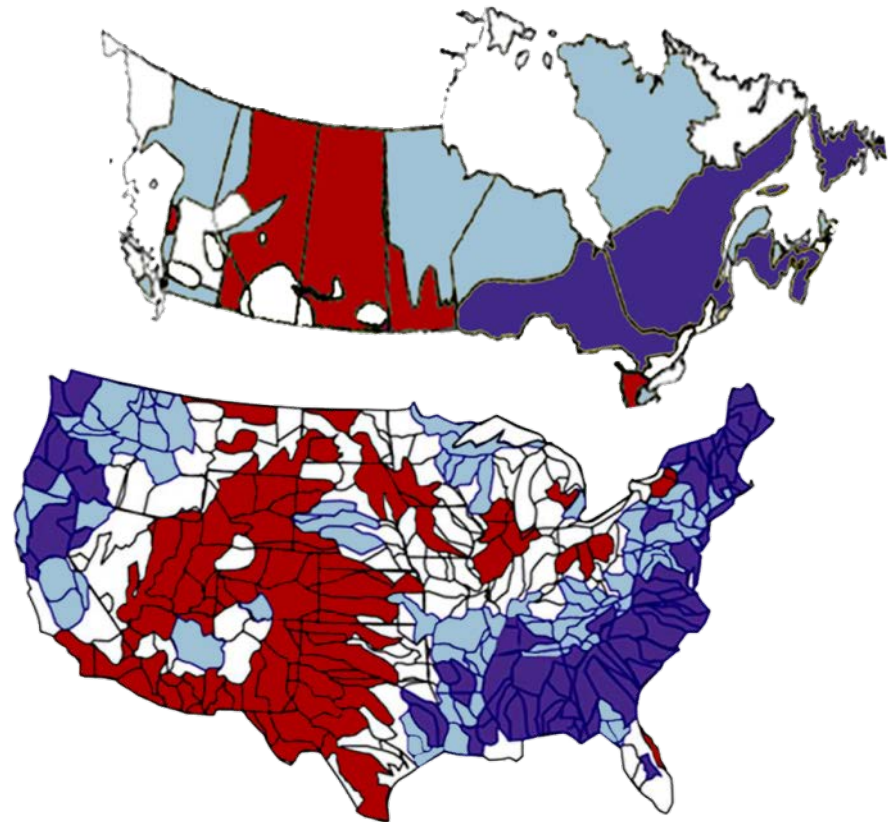
Causes Spotting and Mineral Stains



Hard Water Concentration Levels

United States and Canada

According to the U.S. Geological survey, 85% of homes in North America have hard water



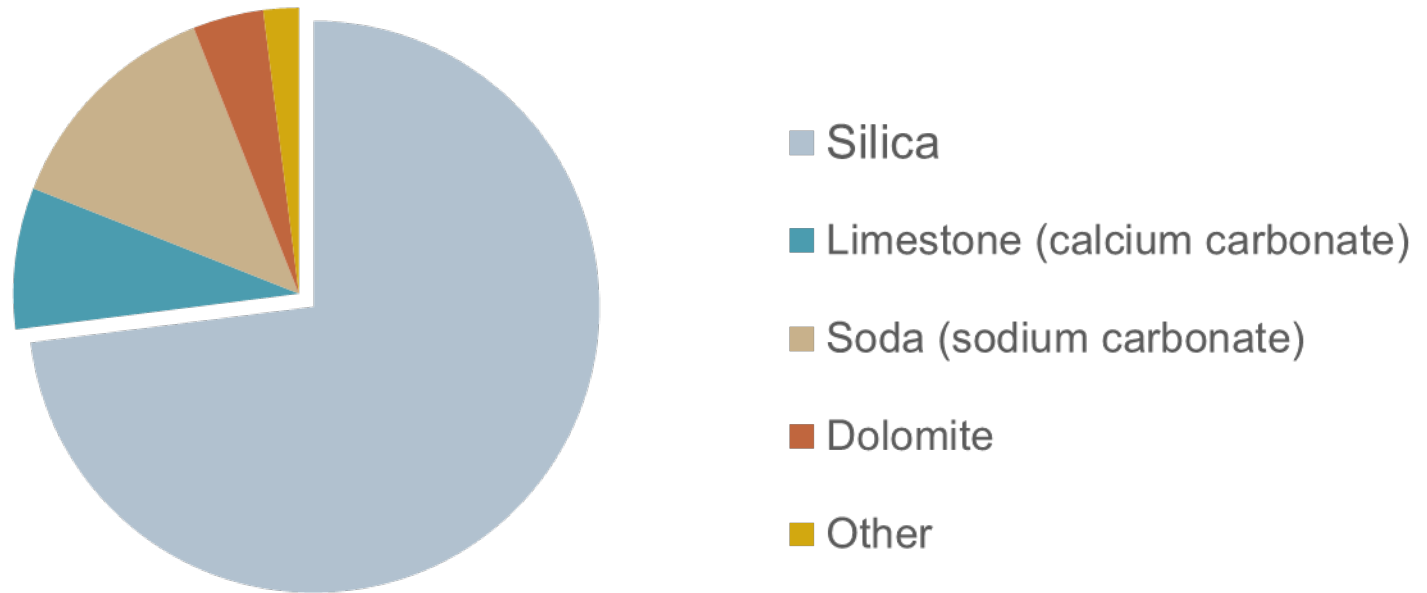


Silica in Water

Causes Spotting and Stains



Silica and Float Glass



Silica is the most common constituent of sand and is the primary building block of float glass composition.



Where is Silica?





Cleaning Tips by Water Type

Water Type	Symptom	Effective Cleaners	Recommended Cleaner	Cleaning Frequency*
Soft water	Water spots come off with soap & water	Any glass cleaner	Windex	As needed
Hard water	Water spots are removed with vinegar	Any acidic glass cleaner	50/50 solution of vinegar & water	About every 15 showers
Water with silica	Water spots are not removed with vinegar	Cleaners with mild abrasives	Soft Scrub Lemon Cleanser	About every 10 showers

*Cleaning frequency recommendations are guidelines only. Actual cleaning frequency will depend upon humidity, degree of water hardness, shower temperature and other variables. In cases with extremely high silica content, it may be helpful to squeegee as needed between cleanings.





Enduring Protection

ShowerGuard is a permanent coating, infused in the glass

ShowerGuard does not require reapplication

Spray-on and wipe-on products wear off over time, leaving glass unprotected against harsh conditions



◀ Water does not bead on ShowerGuard's inorganic, permanent coating



◀ Water beads on spray-on organic coatings, which wear off over time



Exceptional Support
Lifetime Limited Warranty

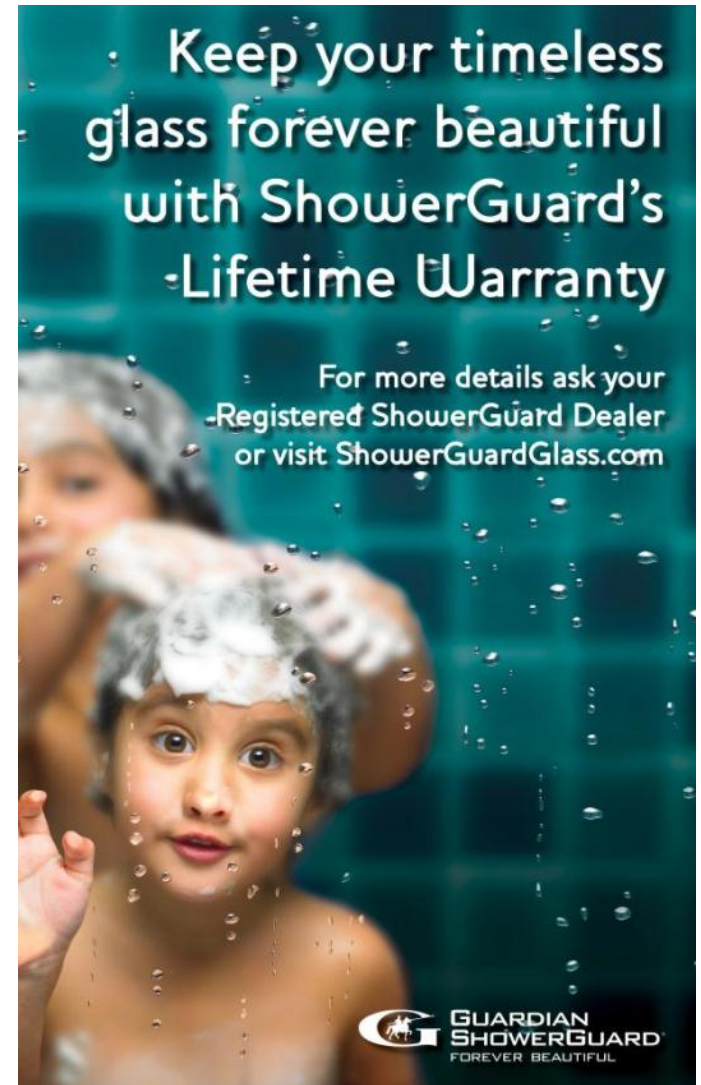
Lifetime Limited Warranty

Extraordinary shower glass deserves an extraordinary warranty.

ShowerGuard's Lifetime Limited Warranty is the best available consumer warranty for any shower glass protection on the market.

WARRANTY HIGHLIGHTS

- Back by the ShowerGuard Customer Concern Resolution System
- Non-transferrable, meaning only the original end-user is warranted.
- Proof of ShowerGuard purchase is required.





From Start to Satisfied

Guardian provides a Customer Concern Resolution System to ensure each concern is handled quickly and efficiently – allowing you to keep doing your job.



Inquiry
submission

Guardian
initial
contact

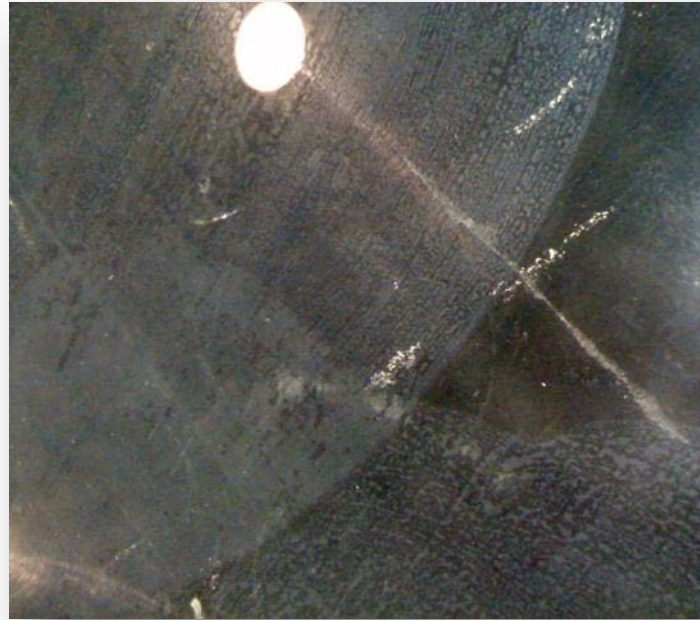
Visit
needed

Third party
inspection

Resolution

DO NOT USE

- Avoid abrasive cleaners, such as **AJAX**, **COMET POWDER**, **ROUGE**, **CERIUM OXIDE**, **CRL BIOCLEAN** and **SPARKLE**.
- **HYDROFLUORIC** and **PHSPHORIC ACID** are corrosive to the coating and glass and shouldn't be used.
- Don't use **RAZOR BLADES** on the coated surface.



Approved Sealants

When installing ShowerGuard, care must be taken not to damage the surface or edges. Glazing sealants should be applied per the sealant manufacturer's instructions.

Sealant Type	Approved/Not Approved
CRL 33 S Clear Silicone	FAIL (adhesion failure)
CRL Water Clear Silicone	FAIL (adhesion failure)
CRL 408 RTV White Silicone	PASS
CRL 408 RTV Clear Silicone	PASS
Tremsil 200 Clear	PASS
Dow Corning 786 White Silicone	FAIL (adhesion failure)
Dow Corning 791 White Silicone	FAIL (adhesion failure)
Dow Corning 795 White Silicone	PASS
Dow Corning Tub, Tile & Ceramic White Silicone	FAIL (adhesion failure)

